



MAYFAIR PLACE

**6707 ELBOW DRIVE SW
CALGARY, ALBERTA**



Common Area Amenity

HIGHLIGHTS

- Steps away from Chinook Centre with other nearby retail, services and amenities in the area.
- Ample above and heated underground parking with designated visitor parking stalls.
- Chinook LRT station within short walking distance and bus stops directly in front of building.
- Approximately 360 attached residential apartments supporting the commercial tenants.
- Added bonus, tenants receive access to weight room, swimming pool, and sauna facility.

PROPERTY DESCRIPTION

Rent:	Below Market
Op. Costs:	\$20.19 psf est. 2024 - basic utilities included
Rentable Area:	Unit 126: 2,362 sq. ft. Unit 211: 1,552 sq. ft. Unit 218: 2,524 sq. ft. Unit 241: 217 sq. ft. Unit 242: 515 sq. ft. Unit 250: 2,601 sq. ft. Unit 313: 1,613 sq. ft. Unit 314: 2,286 sq. ft. Unit 317: 572 sq. ft.
Parking:	Common usage for above and underground parkade reserved underground stalls available

BUILDING INFO



Unit Options

Turn Key and Build to Suit Options Avail.



Floors

Three Elevator Access



Zoning

C-COR2



Traffic Count

30,000 vpd Elbow Dr.
108,000 vpd Glenmore Tr.

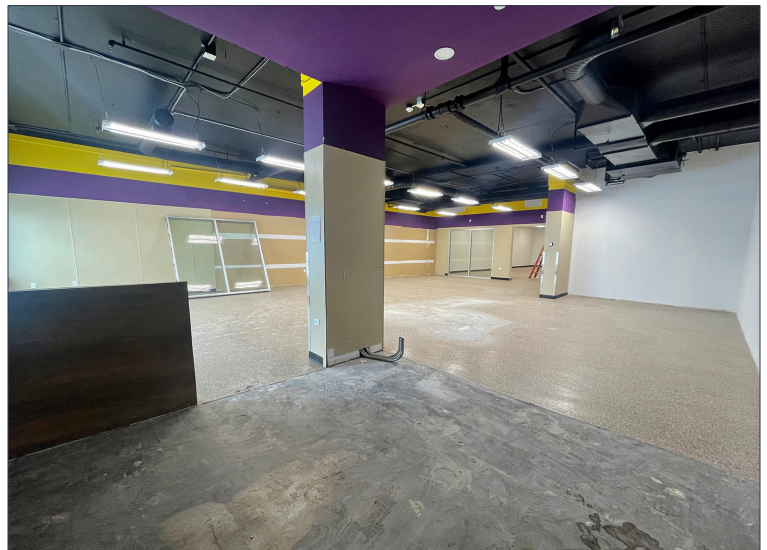
HEAD OFFICE
Suite 300, 1324 - 11 Avenue SW
Calgary, Alberta T3C 0M6
Toll Free 1.800.750.6766
AvenueCommercial.com

AVENUE | Commercial
Real Estate Solutions

FLOOR PLANS

Mayfair Place, 6707 Elbow Drive SW, Calgary, Alberta

Unit 126: 2,362 SF



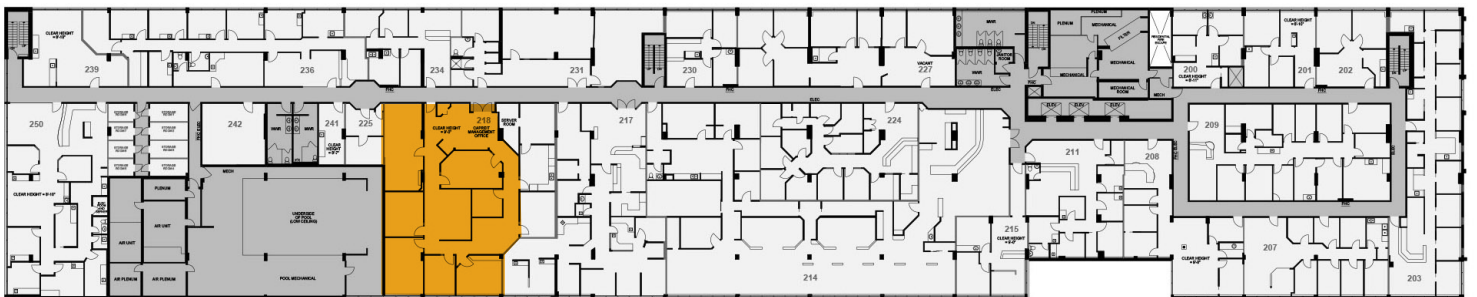
FLOOR PLANS

Mayfair Place, 6707 Elbow Drive SW, Calgary, Alberta

Unit 211: 1,552 SF Small Turnkey Office



Unit 218: 2,524 SF



FLOOR PLANS

Mayfair Place, 6707 Elbow Drive SW, Calgary, Alberta

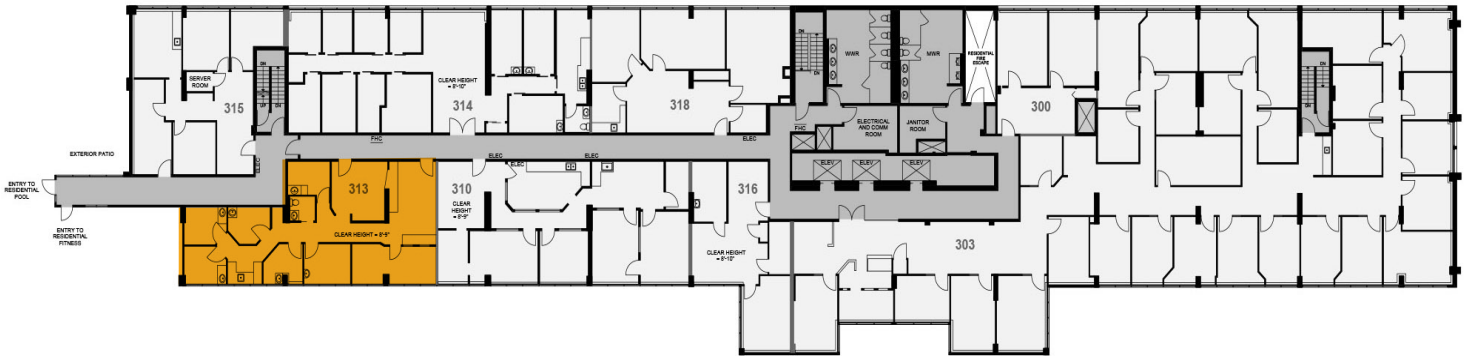
Unit 250: 2,601 SF



FLOOR PLANS

Mayfair Place, 6707 Elbow Drive SW, Calgary, Alberta

Unit 313: 1,613 SF



HEAD OFFICE

Suite 300, 1324 - 11 Avenue SW
Calgary, Alberta T3C 0M6

Main 403.802.6766
Toll Free 800.750.6766

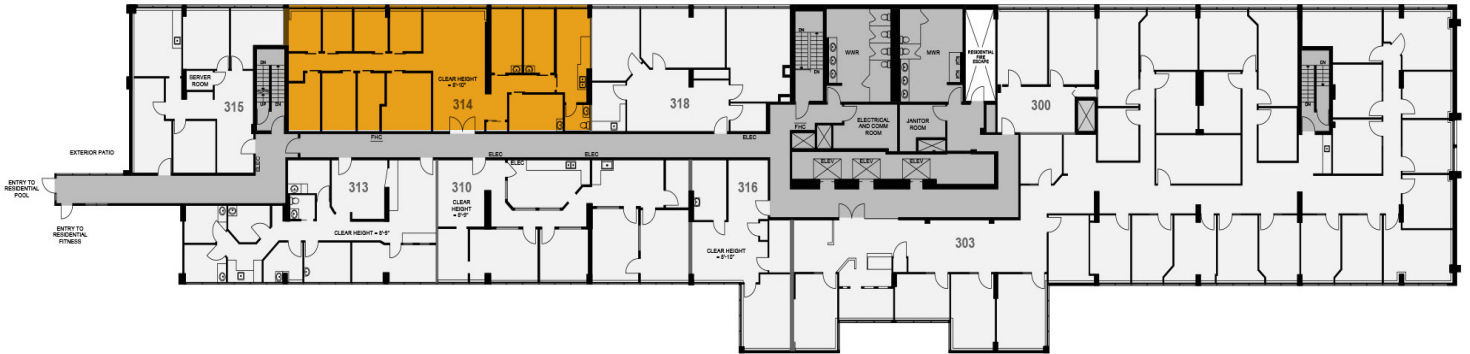
AvenueCommercial.com



FLOOR PLANS

Mayfair Place, 6707 Elbow Drive SW, Calgary, Alberta

Unit 314: 2,286 SF

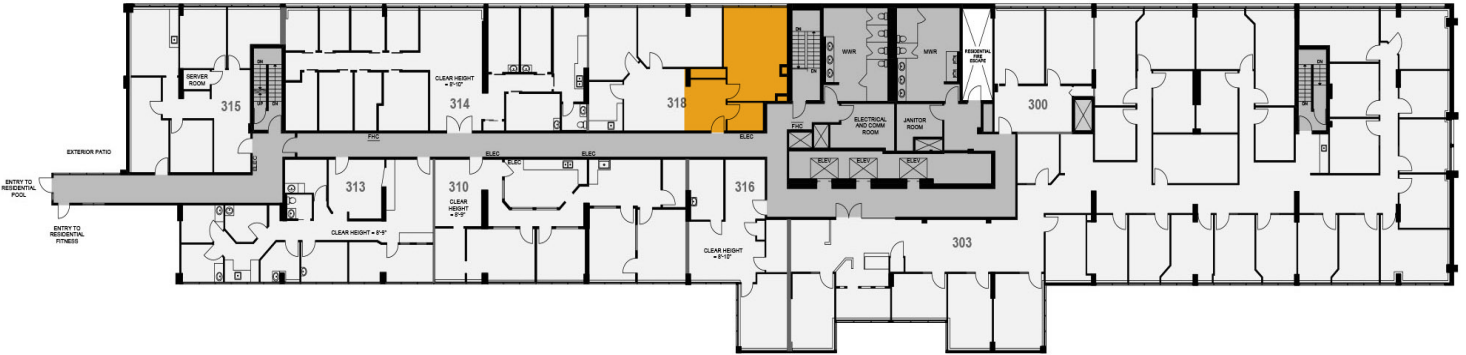


HEAD OFFICE

Suite 300, 1324 - 11 Avenue SW
Calgary, Alberta T3C 0M6

Main 403.802.6766
Toll Free 800.750.6766

Unit 317: 572 SF

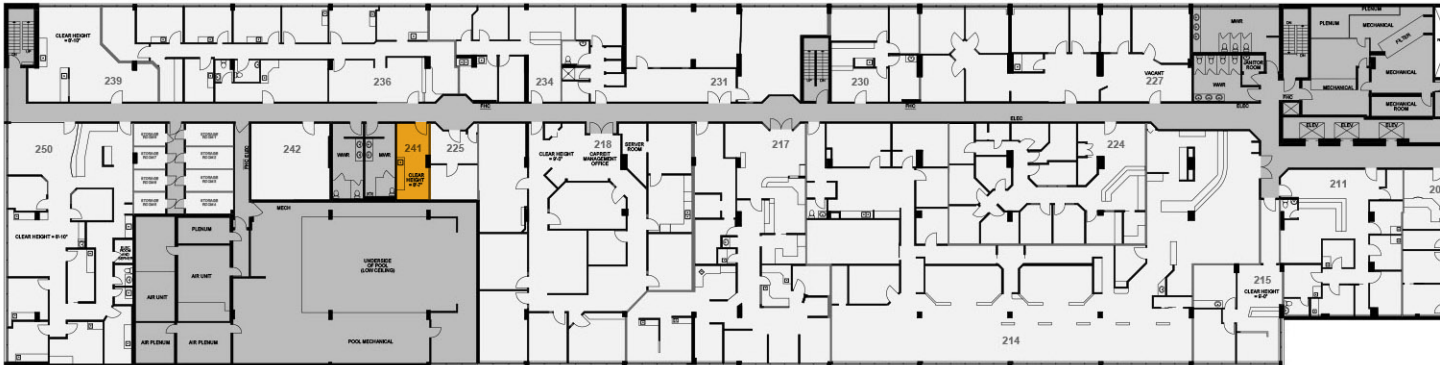


HEAD OFFICE

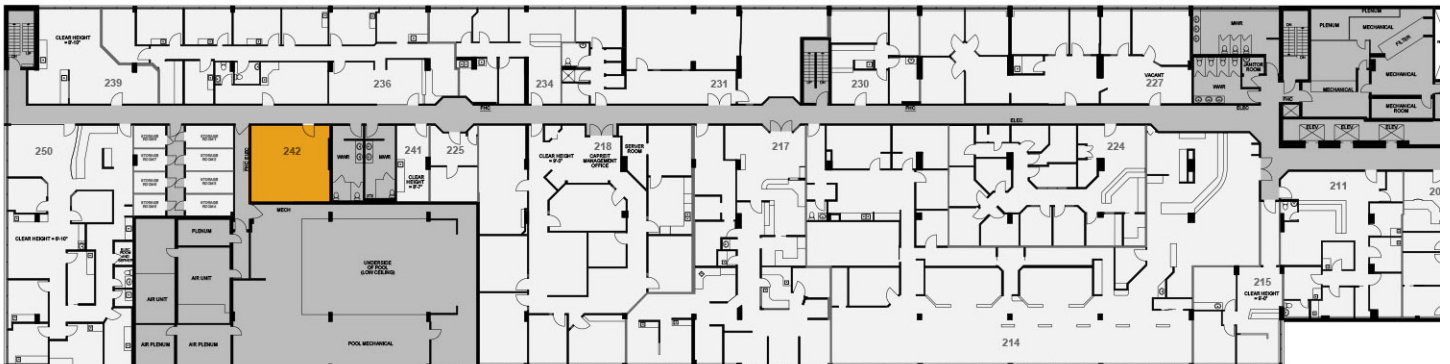
Suite 300, 1324 - 11 Avenue SW
Calgary, Alberta T3C 0M6

Main 403.802.6766
Toll Free 800.750.6766

Unit 241: 217 SF



Unit 242: 515 SF



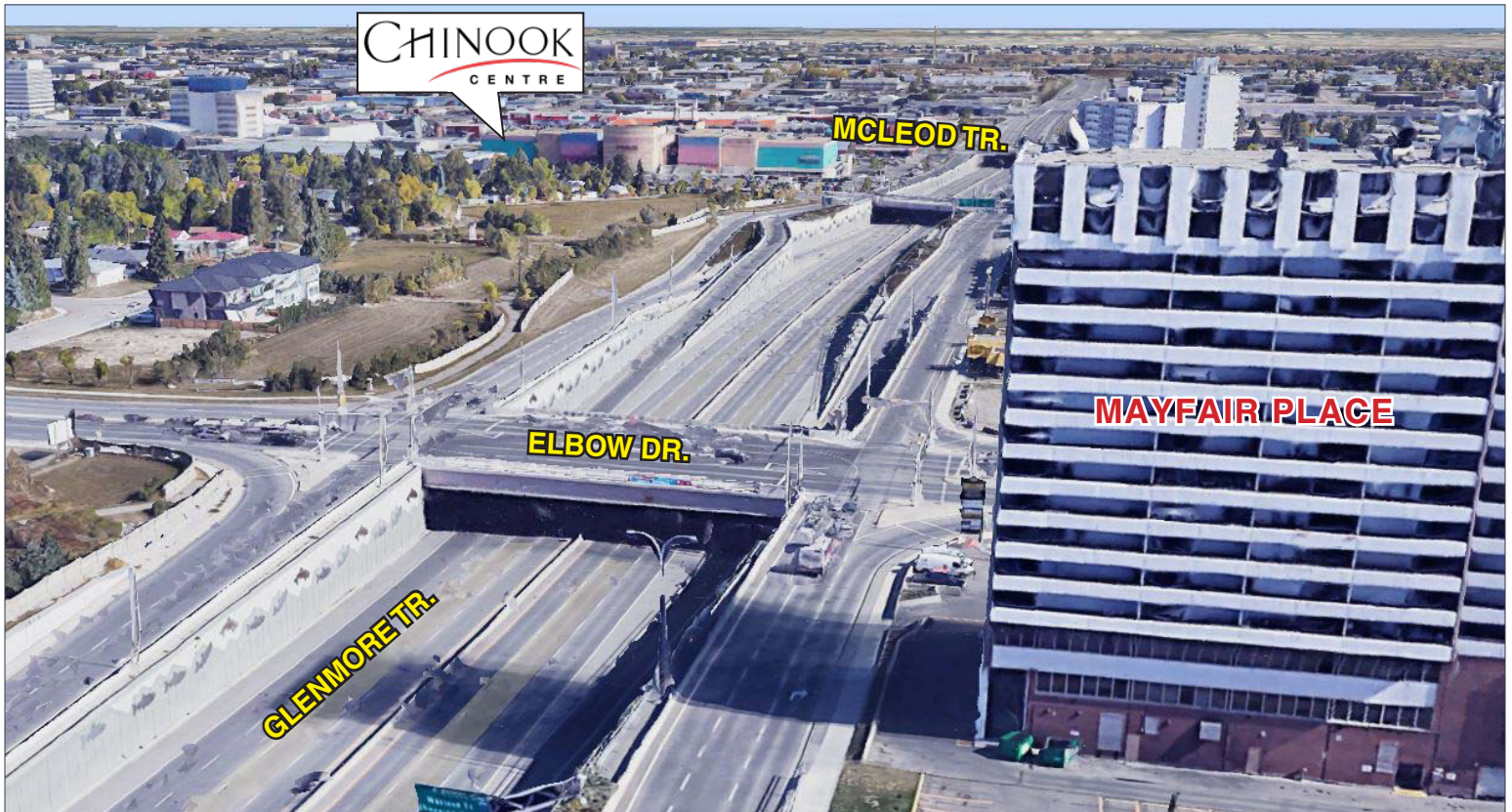
HEAD OFFICE

Suite 300, 1324 – 11 Avenue SW
Calgary, Alberta T3C 0M6

Main 403.802.6766
Toll Free 800.750.6766

COMMON AREA

Mayfair Place, 6707 Elbow Drive SW, Calgary, Alberta



LOCATION

Mayfair Place, 6707 Elbow Drive SW, Calgary, Alberta



CHOOSE YOUR AVENUE

Commercial / Residential / Financing / Property Management / Investments

Brandon Lau

Vice President

403.708.0730

blau@avenuecommercial.com

This brochure is intended for information purposes only and should not be relied upon for accurate factual information by the recipients hereof. The information contained herein is based on information which Avenue Commercial deems reliable. The information contained herein is subject to change without notice.

HEAD OFFICE

Suite 300, 1324 – 11 Avenue SW
Calgary, Alberta T3C 0M6

Main 403.802.6766

Toll Free 800.750.6766