

For Lease



GREAT LOCATION

5720 SILVER SPRINGS BLVD. NW
CALGARY, ALBERTA



HIGHLIGHTS

- Located in the desirable community of Silver Springs
- Easy access, egress to Sarcee Trail and Crowchild Trail SW
- Beautifully overlooking Winsport Canada Olympic Park and the Bow River
- Across the street from Silver Springs School (K-6), Silver Springs Pool & Community Centre
- Backing onto Sarcee park consisting of off-leash parks, public baseball diamonds and bicycle paths
- Existing tenant mix include: Value Village, Mac's, Coffee shop, Hair Salon, Optometrist, Pizza & Steakhouse, Chinese Take-out, Dance Studio, Music Studio, Veterinary Clinic etc.

DEMOGRAPHICS



Population
9,000



Median Age
43



Traffic Count
60,000 vpd (Crowchild)
14,000 vpd (Silver Springs Blvd)



Household Income
\$95,116

PROPERTY DESCRIPTION

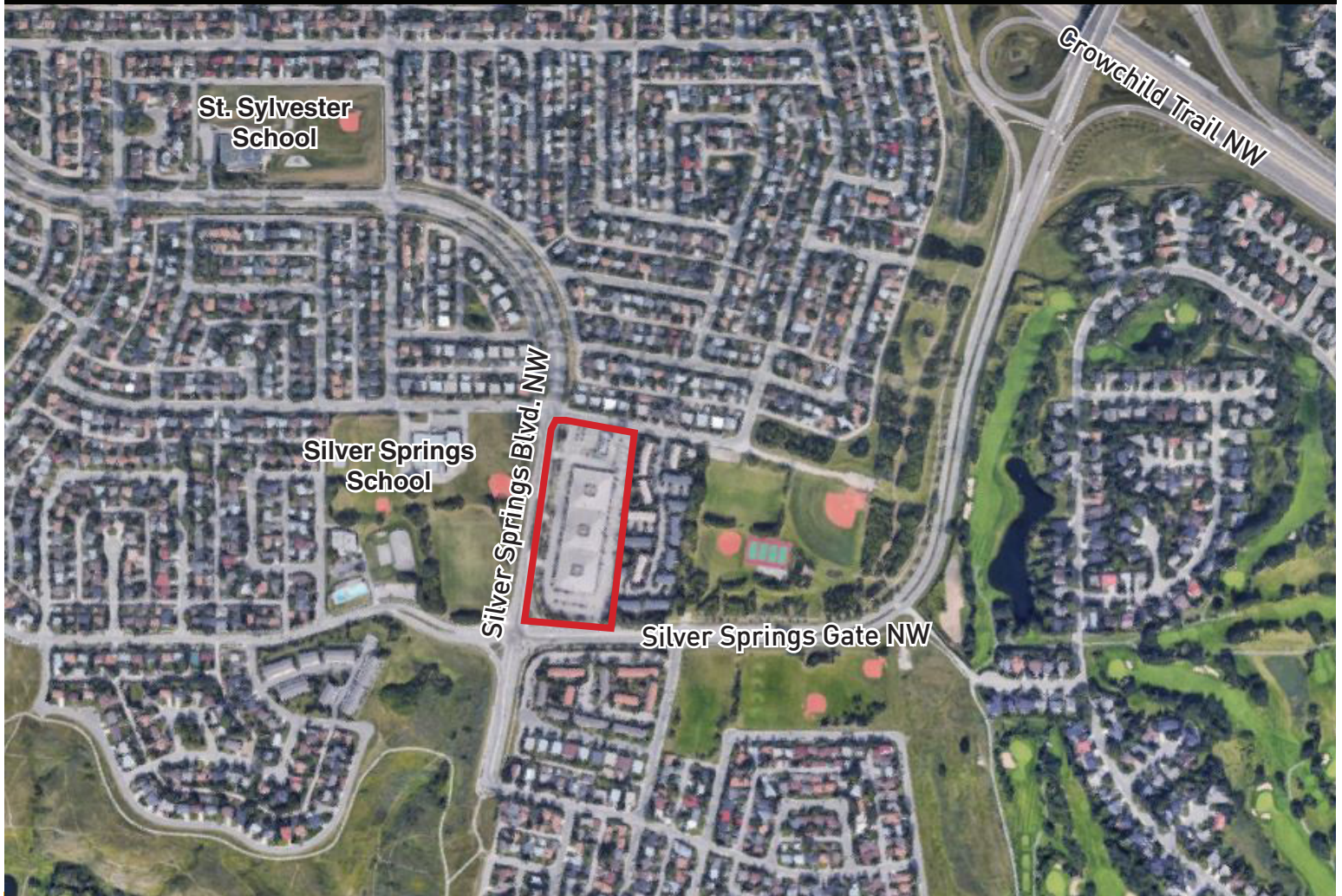
Market Rates:	Market
Op Costs & Taxes:	\$13.54 psf est.
Size:	Unit 17A/B: 2,635 sq. ft. Unit 19/20: 887/1,074 sq. ft. interior unit Unit 13: 6,081 sq. ft.
Term:	5 - 10 years
Zoning:	C-C1

HEAD OFFICE
Suite 300, 1324 - 11 Avenue SW
Calgary, Alberta T3C 0M6
Toll Free 1.800.750.6766
AvenueCommercial.com

AVENUE | Commercial
Real Estate Solutions

LOCATION

5720 Silver Springs Blvd. NW, Calgary, Alberta



CHOOSE YOUR AVENUE

Commercial / Residential / Financing / Property Management / Investments

Brandon Lau
Vice President Sales & Leasing
403.708.0730
blau@avenuecommercial.com

This brochure is intended for information purposes only and should not be relied upon for accurate factual information by the recipients hereof. The information contained herein is based on information which Avenue Commercial deems reliable. The information contained herein is subject to change without notice.



HEAD OFFICE

Suite 300, 1324 – 11 Avenue SW
Calgary, Alberta T3C 0M6

Main 403.802.6766
Toll Free 800.750.6766

AvenueCommercial.com

