

For Lease



RETAIL PLAZA SITE

2934-2942 MAIN STREET S
AIRDRIE, ALBERTA

JOIN THESE POWER CENTRE TENANTS



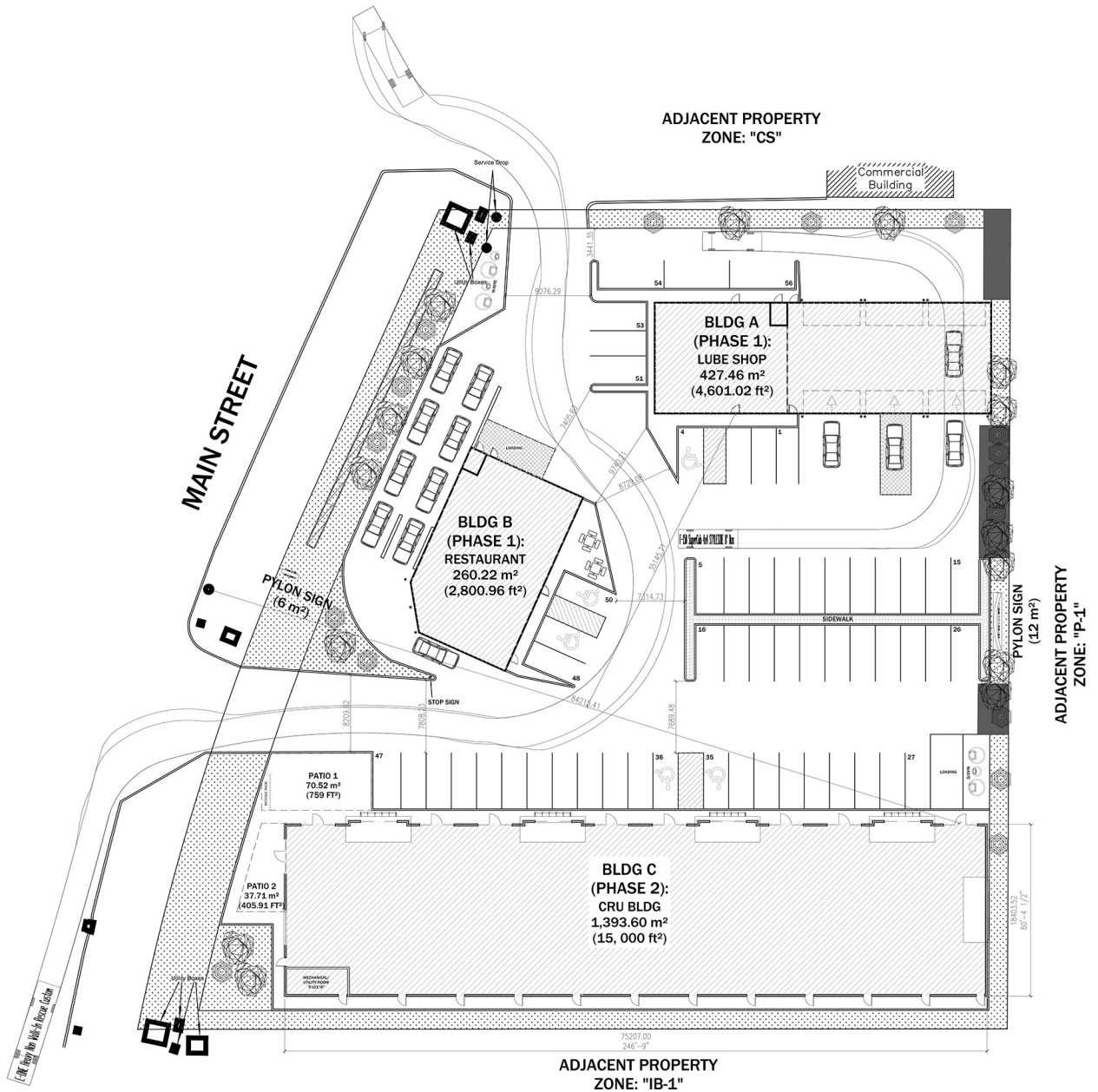
HIGHLIGHTS

This first class retail site is one of the last commercially zoned retail plazas for lease with direct exposure to Highway 2 and located in Airdrie's only power centre. A number of projects will improve accessibility to the area which includes the 40th Avenue Interchange located just 300 meters South which will provide direct access to and from HWY 2.

Lease Rates:	Market
Op. Costs & Taxes:	\$11.50 psf est.
Retail Sizes:	1,000 - 10,000 sq. ft.
Parking:	Ample
Zoning:	CS (Service Commercial)
Available:	Summer 2025
Term:	5 - 10 years

HEAD OFFICE
Suite 300, 1324 - 11 Avenue SW
Calgary, Alberta T3C 0M6
Toll Free 1.800.750.6766
AvenueCommercial.com

AVENUE | Commercial
Real Estate Solutions

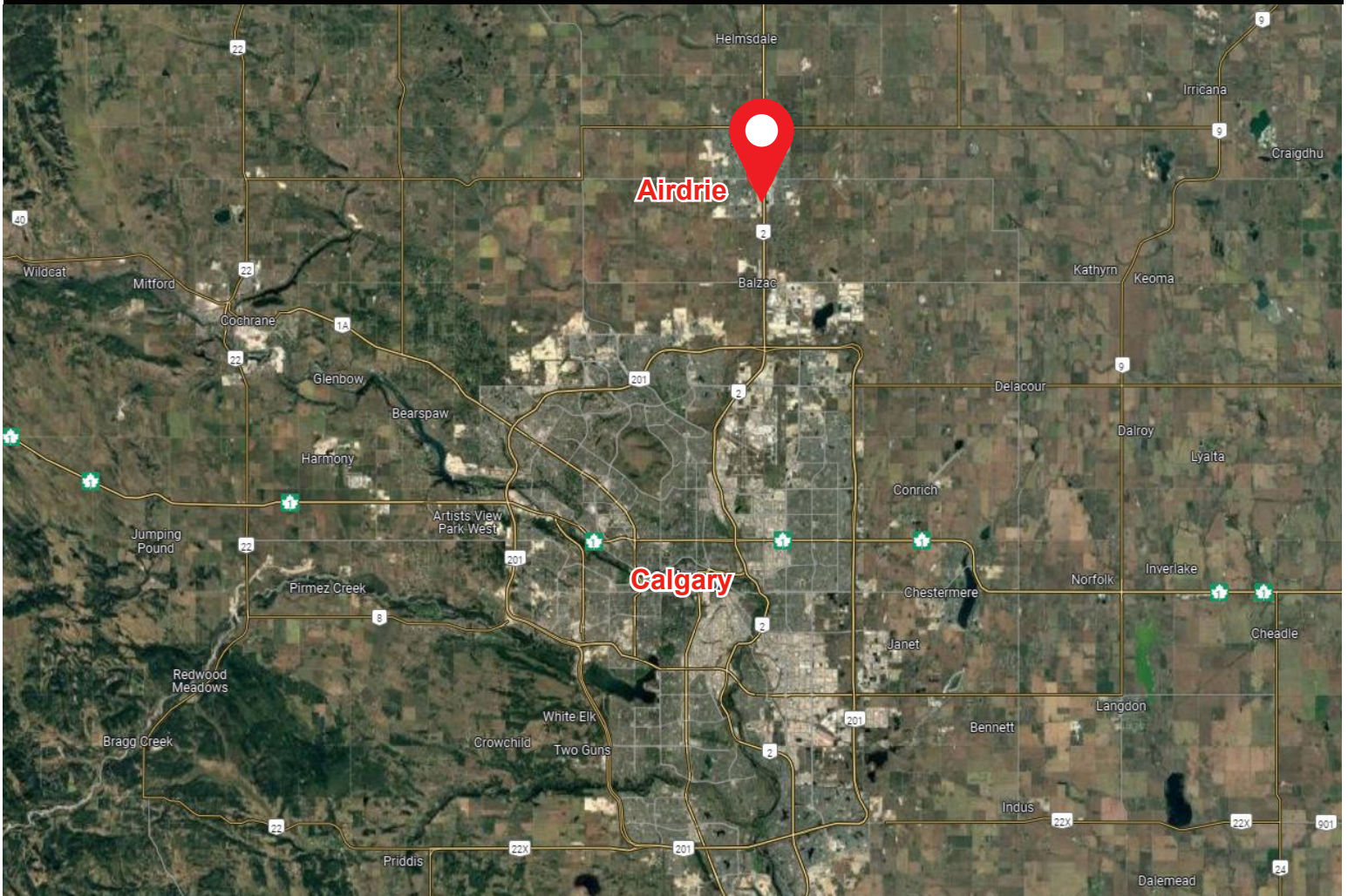


1 SITE PLAN (PROPOSED)
A1.0 1:250



LOCATION

2934-2942 Main Street S, Airdrie, Alberta



CHOOSE YOUR AVENUE

Commercial / Residential / Financing / Property Management / Investments

Steven Butt

President

403.802.6766

sbutt@avenuecommercial.com

This brochure is intended for information purposes only and should not be relied upon for accurate factual information by the recipients hereof. The information contained herein is based on information which Avenue Commercial deems reliable. The information contained herein is subject to change without notice.



HEAD OFFICE

Suite 300, 1324 - 11 Avenue SW
Calgary, Alberta T3C 0M6

Main 403.802.6766

Toll Free 800.750.6766

AvenueCommercial.com

